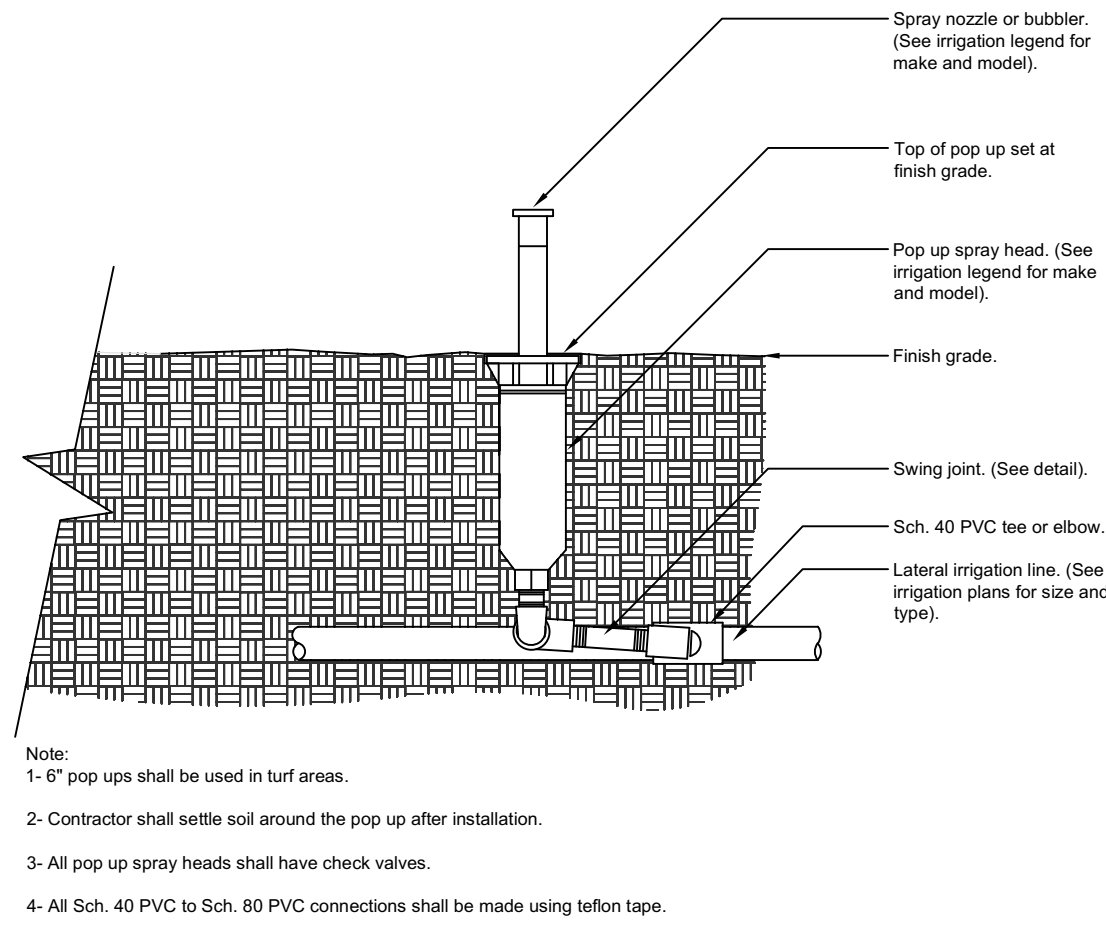
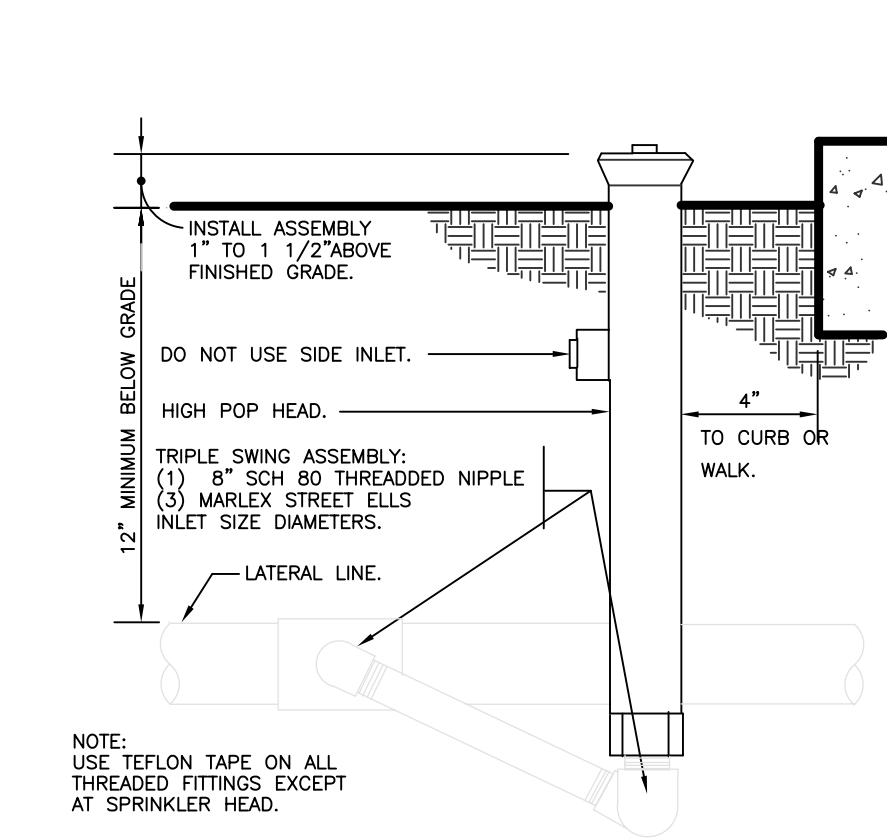


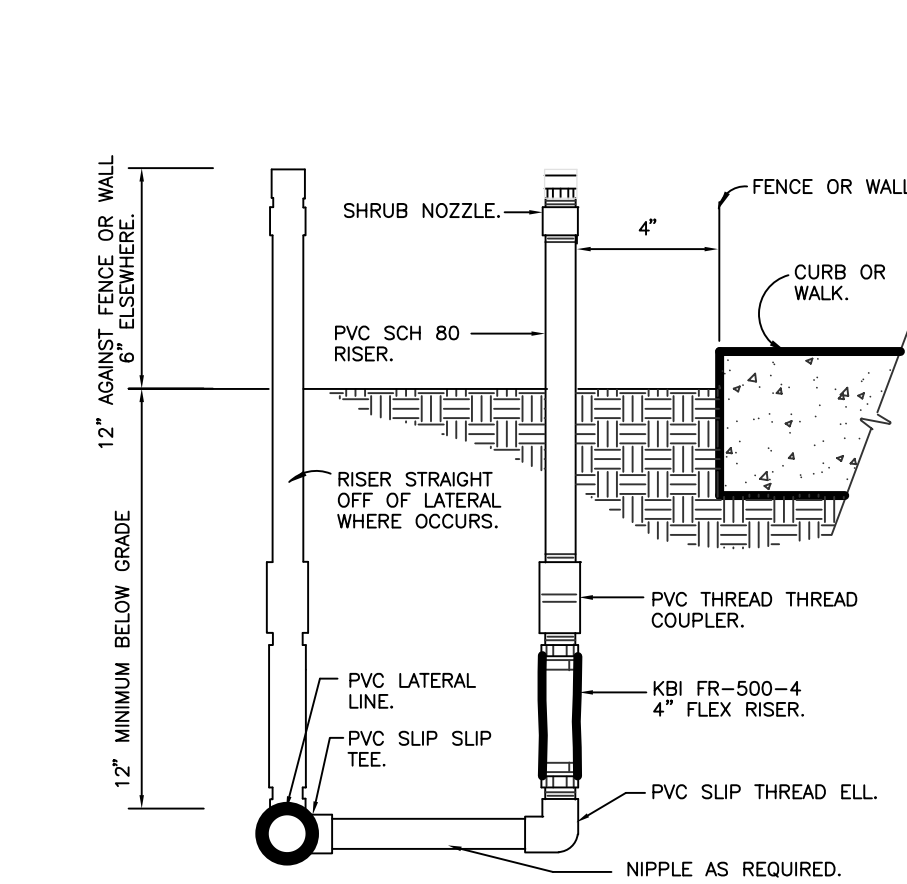
1 TURF SPRAY MARLEX ASSEMBLY  
3" = 1'-0" 32 8403.13-01



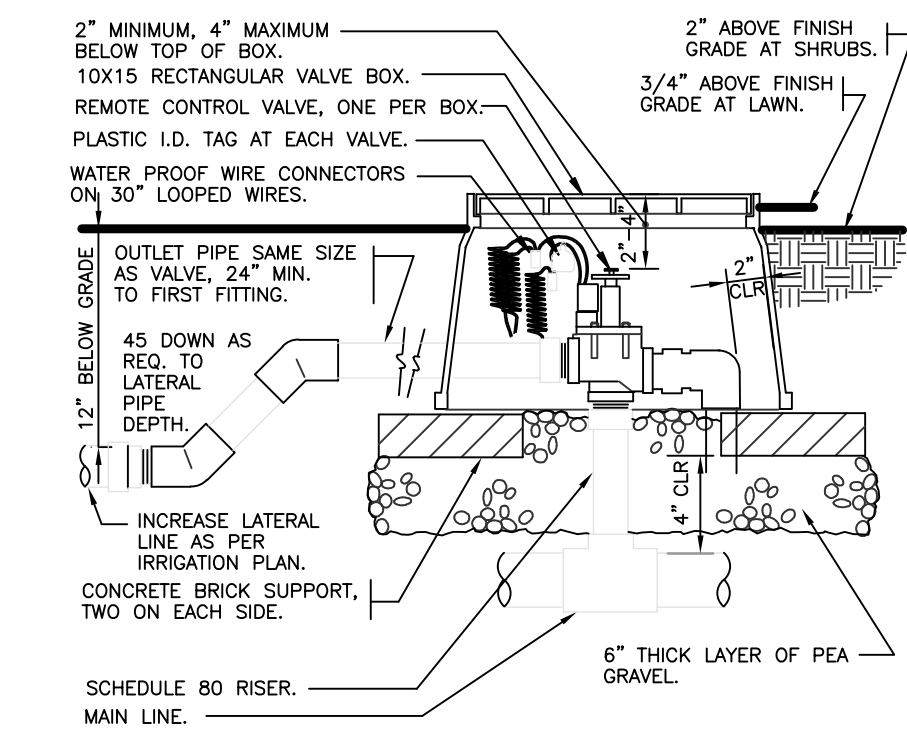
2 SHRUB SPRAY HIGHPOP MARLEX ASSEMBLY  
3" = 1'-0" 32 8403.29-10



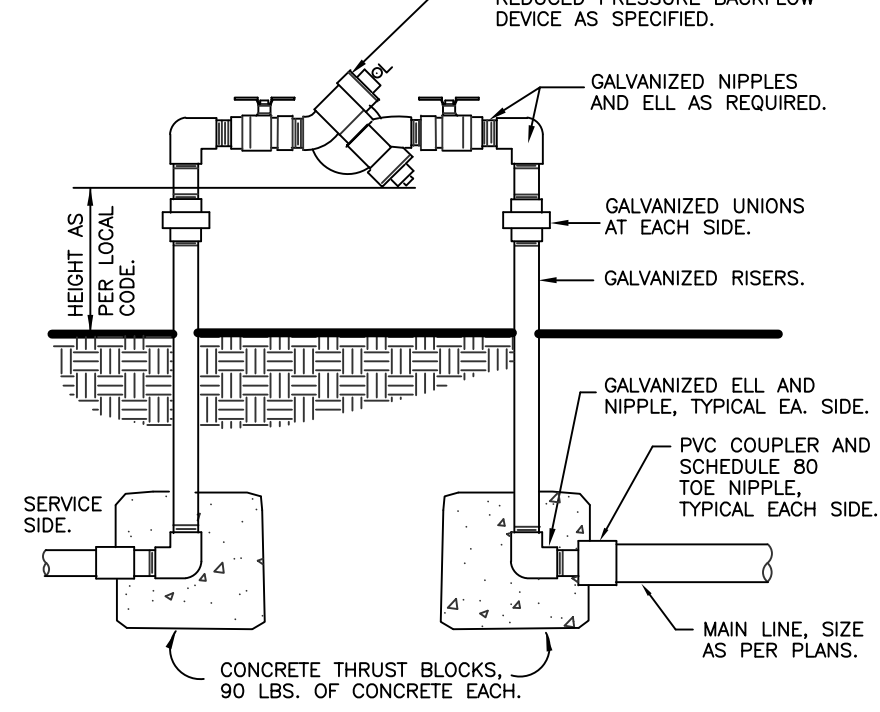
3 SHRUB SPRAY KBI FIXED RISER  
3" = 1'-0" 32 8403.23-01



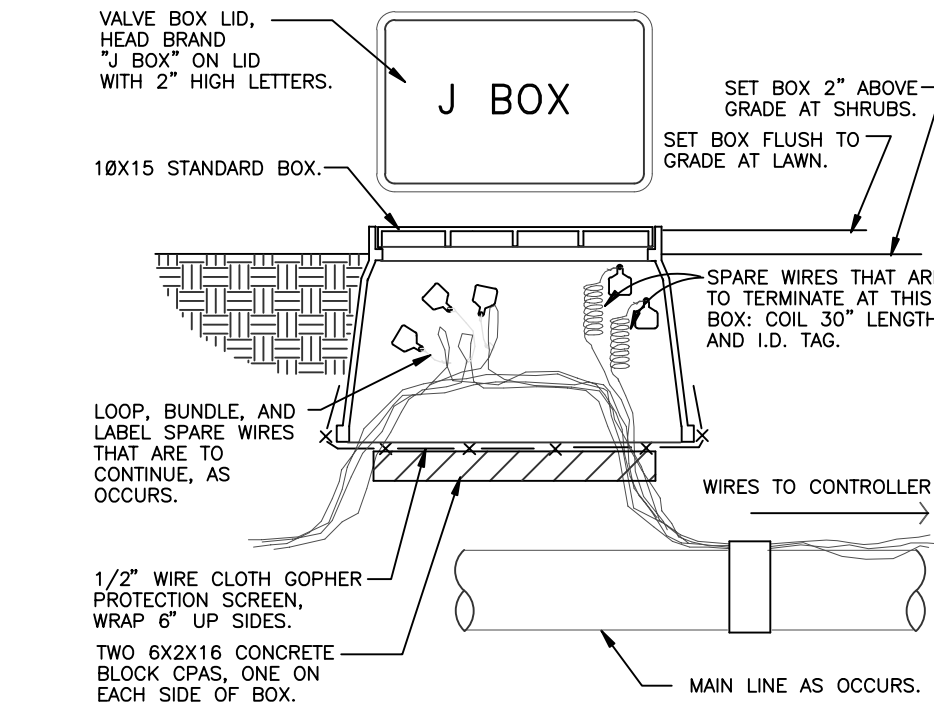
4 POPUP BUBBLER AT PLANT PIT  
3" = 1'-0" 32 8403.53-04



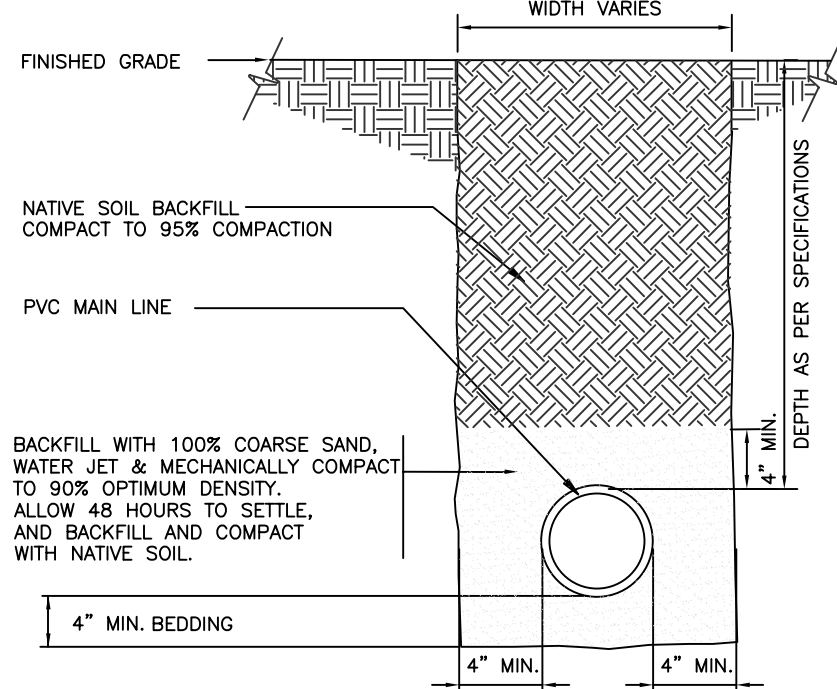
5 ROTOR SPRAYHEAD  
1 1/2" = 1'-0" 32 8406.13-01



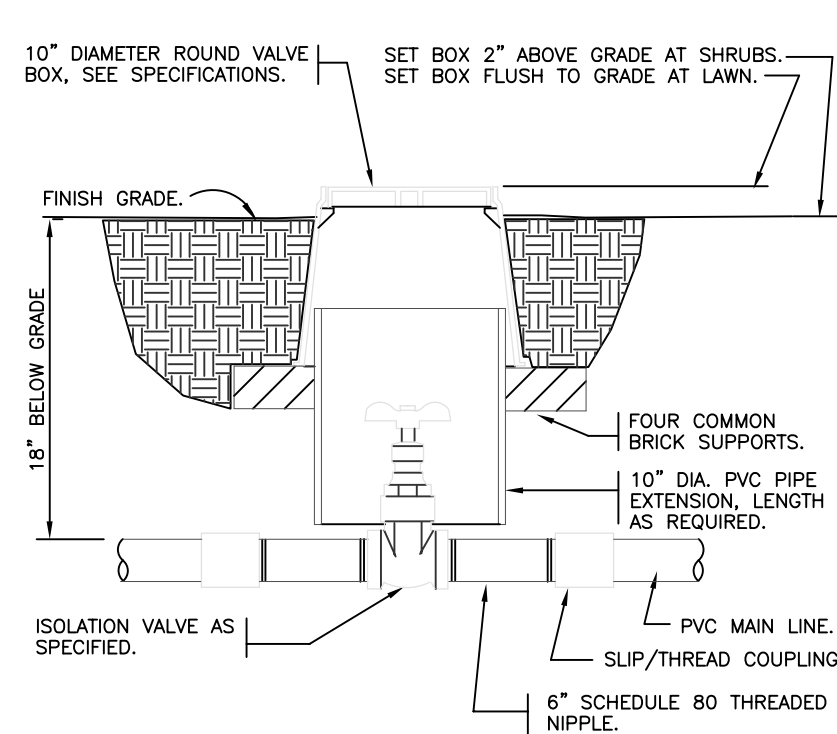
6 ELECTRIC REMOTE CONTROL VALVE  
1" = 1'-0" 32 8406.13-01



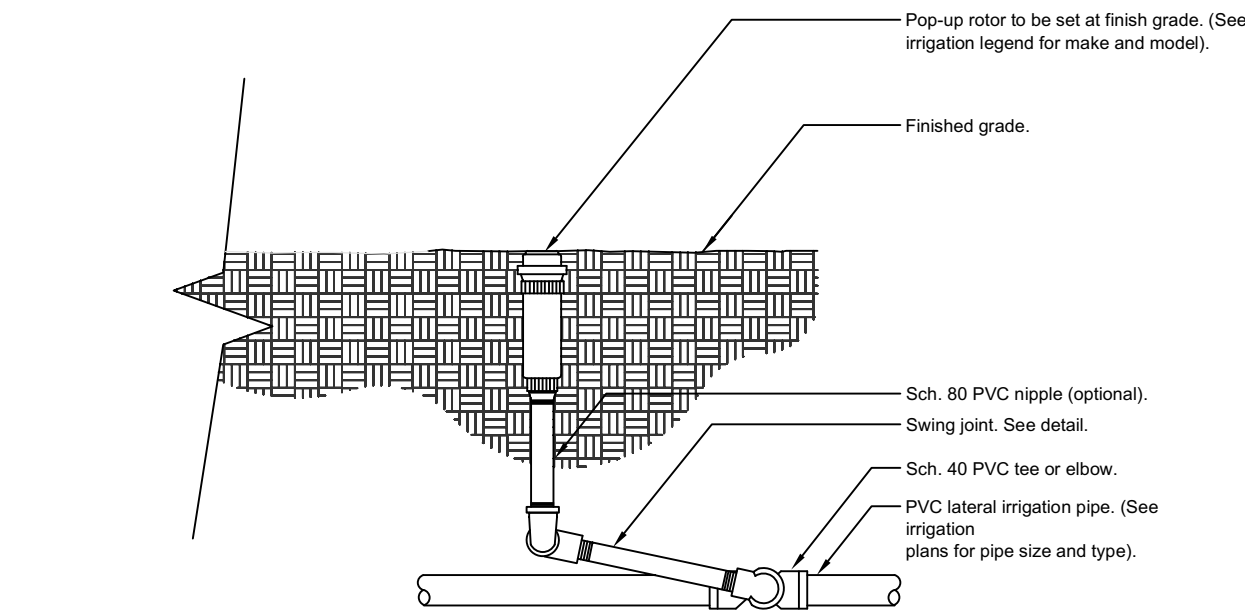
7 BRASS ISOLATION VALVE  
1 1/2" = 1'-0" 32 8406.33-01



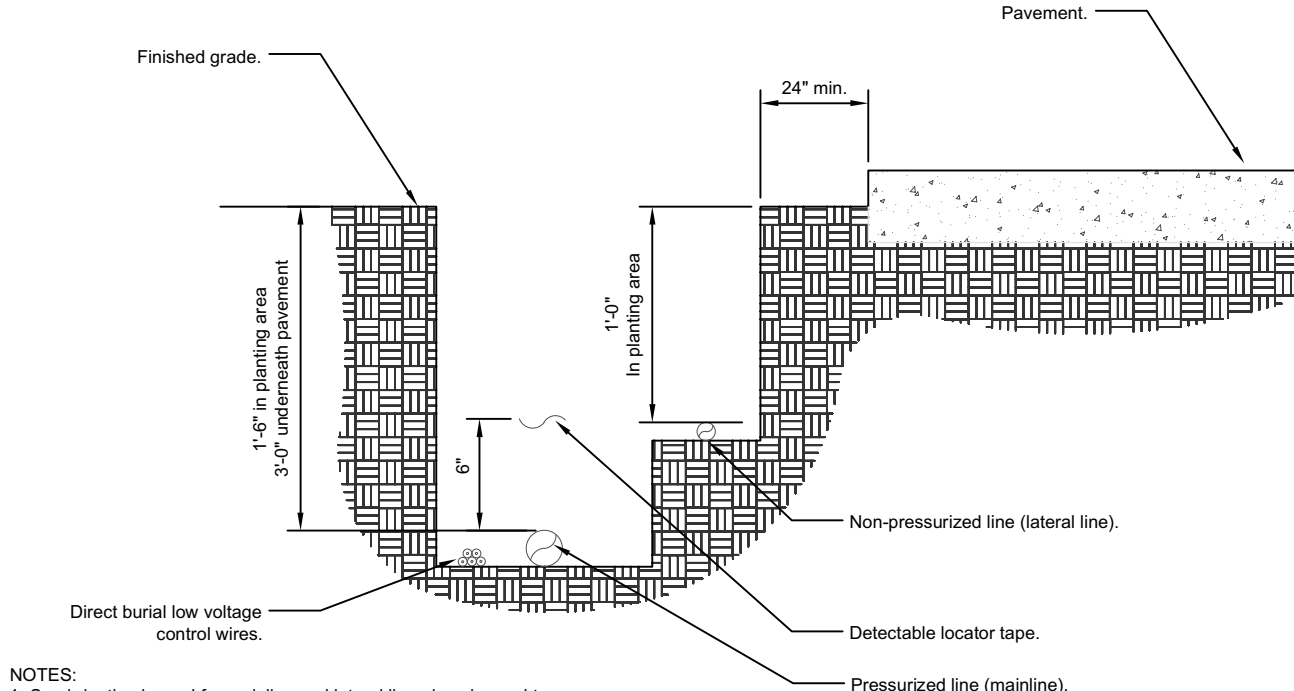
8 REDUCED PRESSURE BACKFLOW DEVICE  
1 1/2" = 1'-0" 32 8406.33-01



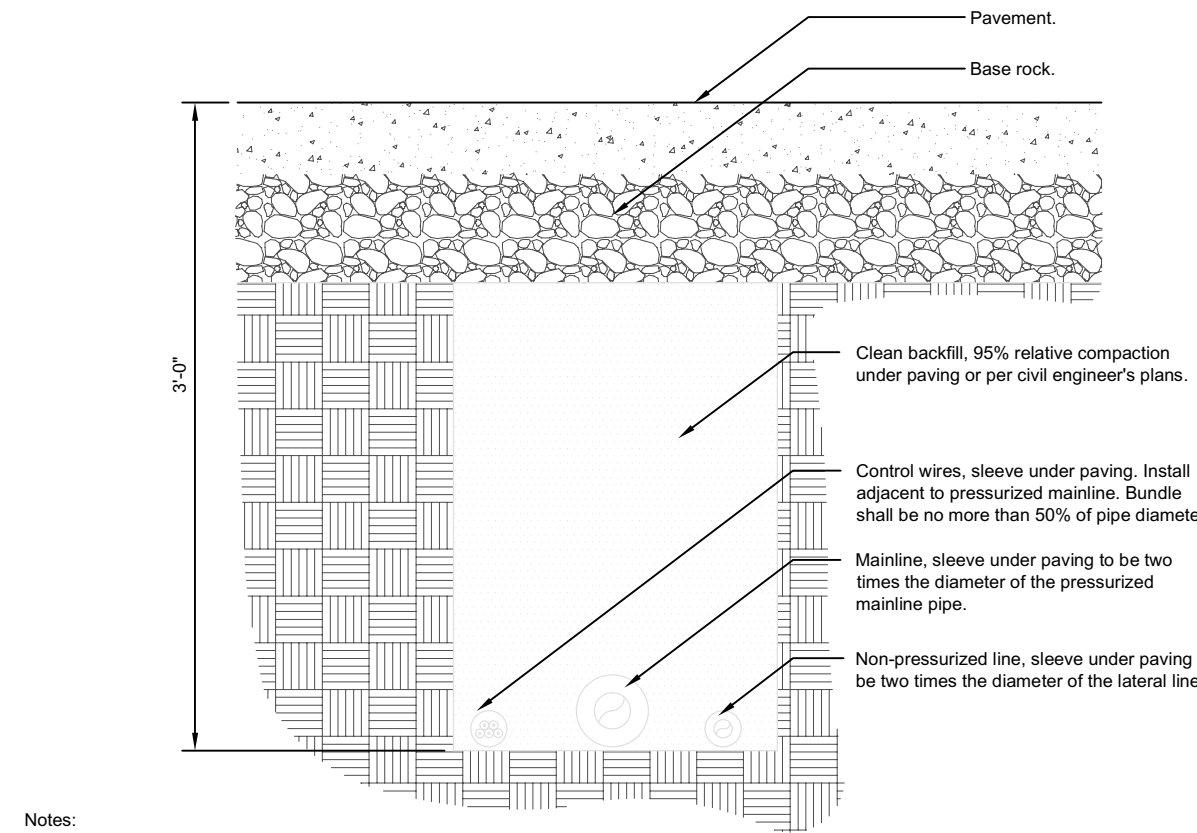
9 WIRE BUNDLE JUNCTION BOX  
1 1/2" = 1'-0" 32 8406.33-01



10 MAINLINE WITH SAND BEDDING  
1 1/2" = 1'-0" 32 8406.33-01



11 BRASS ISOLATION VALVE  
1 1/2" = 1'-0" 32 8406.33-01



12 PIPE BENEATH PAVEMENT  
1 1/2" = 1'-0" 32 8406.33-01

FOLIAGE  
EXPRESSIONS  
8801 SW 192nd Terrace,  
Cutler Bay, FL 33157



Digitally signed by  
James B. Euell  
Date: 2023.10.30  
15:18:55 -04'00'

PROPOSED 12 HOUSES  
NW 10TH STREET  
POMPANO BEACH, FL 33060

DISTRIBUTION:	DATE:

DRAWING NAME:  
IRRIGATION  
DETAILS

DRAWING NUMBER:  
L-305

PZ23-12000051  
12/20/2023